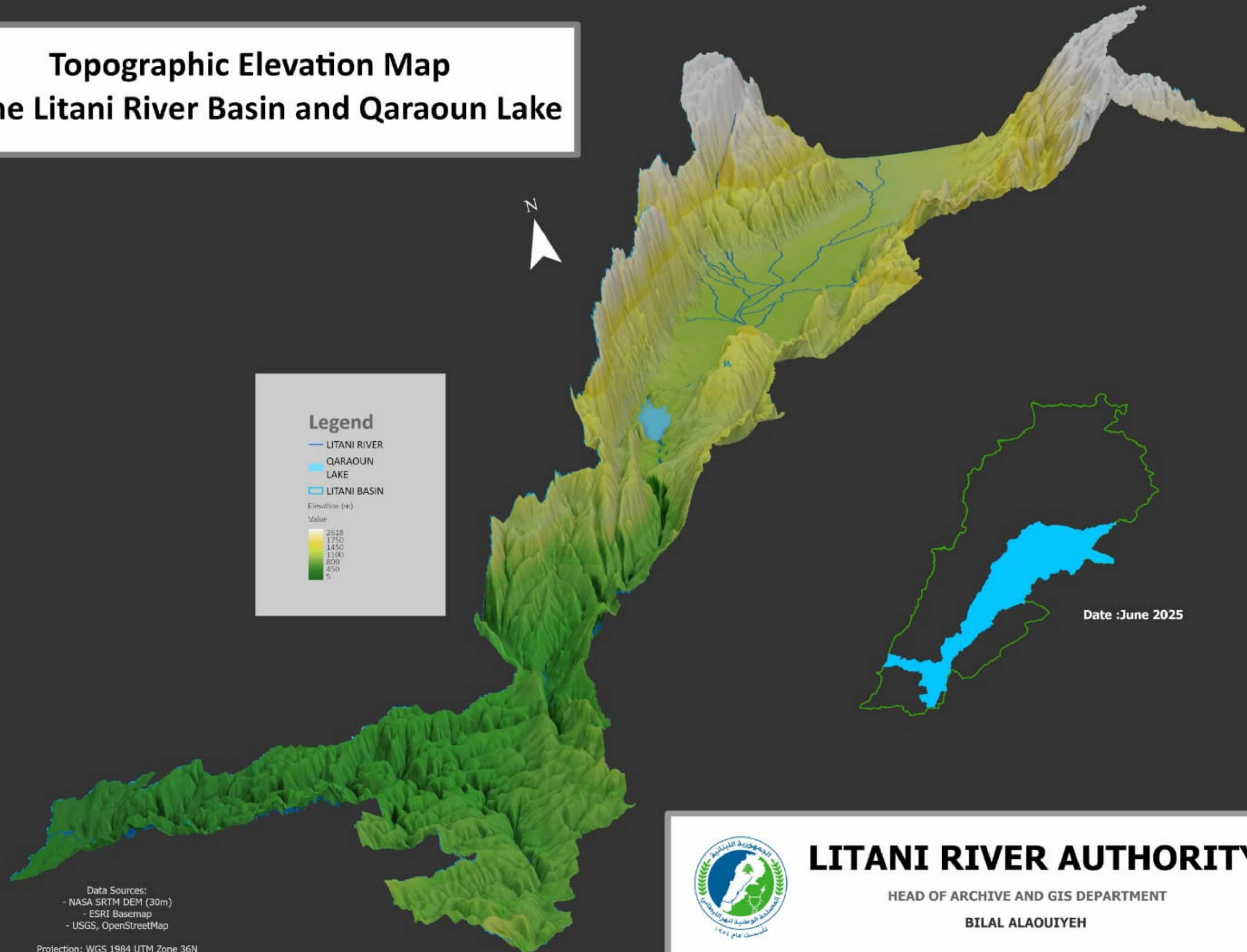


Topographic Elevation Map of the Litani River Basin and Qaraoun Lake



Legend

- LITANI RIVER
- QARAOUN LAKE
- LITANI BASIN

Elevation (m)

Value

2618
1750
1450
1100
800
450
5

Date : June 2025

Data Sources:
- NASA SRTM DEM (30m)
- ESRI Basemap
- USGS, OpenStreetMap

Projection: WGS 1984 UTM Zone 36N
Software: ArcGIS Pro 3.5



LITANI RIVER AUTHORITY
HEAD OF ARCHIVE AND GIS DEPARTMENT
BILAL ALAOUIYEH

Map data © OpenStreetMap contributors, Microsoft, Facebook, Google, Sat, Community Maps contributors, Mapbox by Sat